



SUMMERSPACE.COM



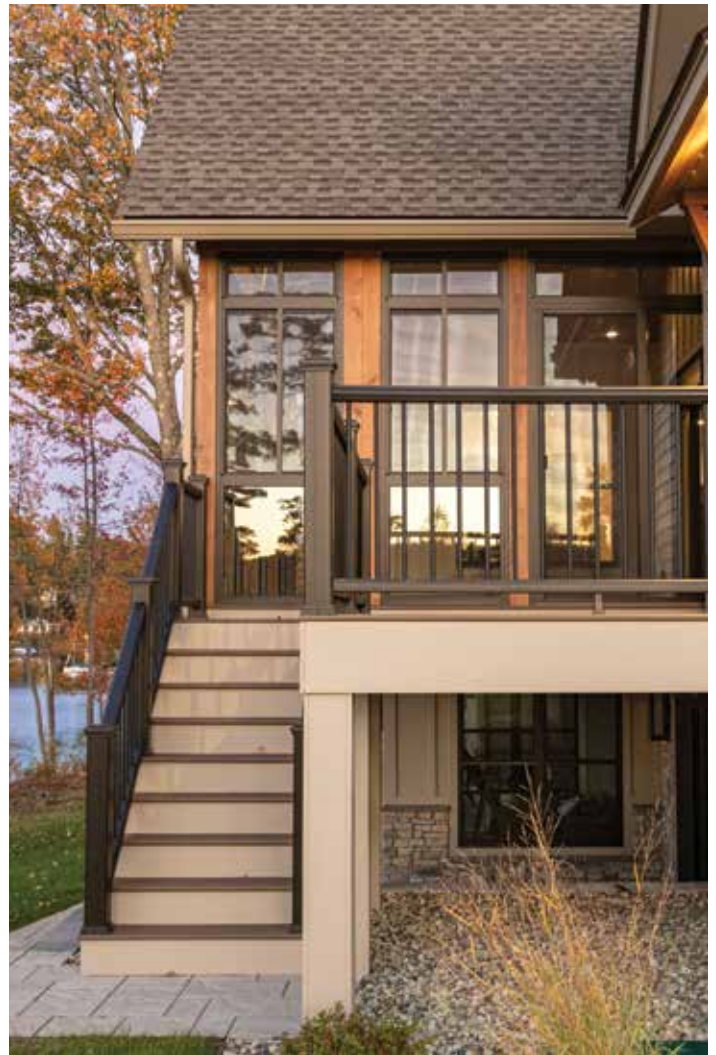
Porch Enclosure Systems



SummerSpace® Porch Enclosure Systems offer a fast, cost-effective way to add functional living space to a home, with most installations completed in less than a day. Custom-sized for a precise fit, the panels typically require no additional finishing and provide an attractive, flexible enclosure for porches or patios. Homeowners can enjoy added usable space that enhances both comfort and aesthetics, while also increasing home value at a fraction of the cost of a four-season room. These systems are designed for versatility, allowing tempered glass and screens to be easily slid or removed to accommodate changing weather conditions.




Effortless Transformation



Photos shown on front cover and this spread courtesy of ATA Construction.







Transform your covered porch or patio into a stylish and comfortable retreat with **Porch Enclosure Systems by SummerSpace®**.

Expertly crafted to fit an opening height up to 120 inches – straight or tapered columns – these systems feature durable powder-coated aluminum, durable screens, and LoE-i89 tempered glass for enhanced protection and extended enjoyment of your outdoor space. With a design that combines functionality and elegance, you can create a cozy, inviting area perfect for gathering with friends and family.



The beauty of **Porch Enclosure Systems by SummerSpace®** is that they conform to any space. Custom-made to fit almost any size porch opening, these systems consist of panels made with powder coated aluminum framing, tempered glass, and durable screen. Designed to be as functional, compact and strong as possible, we've engineered significant performance into a slender panel design for a comfortable space that will endure for years. Panels connect securely for a quick and efficient installation.

SummerSpace Porch Enclosures allow you to turn your open porch into a retreat that's free of insects. Our Clean & Clear screen mesh with watershed technology allows your screen to stay visually clear during heavy rain. Use your porch as a bug-free screen room in summer months. As the weather or seasons change, slide your tempered glass windows closed for a weather-proof room that can be enjoyed during cooler times of the year.

SummerSpace Porch Enclosure Systems are designed to provide a beautiful, weather-resistant protective barrier against the elements in non-habitable living spaces. They are highly effective during normal weather conditions; however, during extreme wind-driven rain, snow, or pollen events, some minor intrusion or seepage may occur. This is considered normal performance.





Panels with active glass plus 36" fixed glass base



Porch before panel installation

These panels made a dramatic difference on this porch, turning it into living space that can be enjoyed all year. The sliding panes can be removed easily for a screen-only room in warmer months.



Active glass panes have been removed, turning this space into a screened-in porch

SUMMERSHIELD™

All powder coatings and applications are not created equal. Our industry-leading pretreatment and proprietary SummerShield powder coating finish exceeds AAMA 2604 specifications, including 3,000 hour salt spray testing. This super durable finish includes UV inhibitors that extend the life of the beautiful, fade-resistant finish. Choose from fifteen low gloss, lightly textured finishes. SummerShield takes it one step further by infusing our coatings with antimicrobial technology for the ultimate in low maintenance finishes.



Steel blue powder coat finish being applied to our panel components.

OUR TEXTURED FRAME COLOR SELECTIONS

The colors displayed below are printed CMYK representations and may not precisely match the final powder coated finishes. Before ordering, please consult a SummerSpace dealer or sales representative to view authentic color samples.

SS9016 White Textured

SS905C Ander Black Textured

SS7042 Graystone Textured

SS1013 Almond Textured

SS7022 Bronze Textured

SS7031 Steel Blue Textured

SS1019 Sand Textured

SS907C Terra Stone Textured

SS5011 Navy Blue Textured

SS8017 Chocolate Textured

SS906C Latte Textured
(formerly Sand Stone)

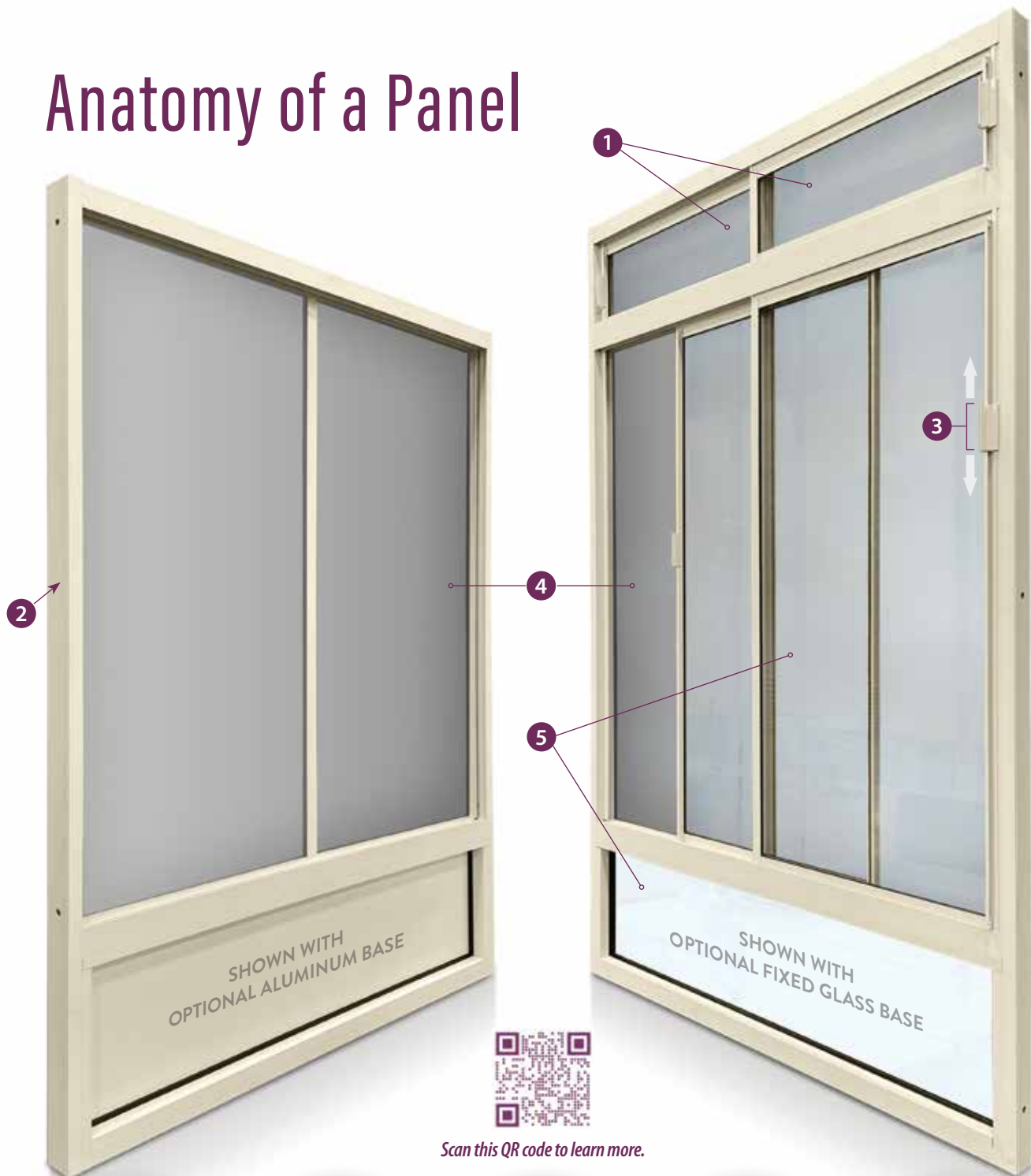
SS3005 Burgundy Textured

SS8022 Espresso Textured

SS7043 Mineral Gray Textured

SS6005 Forest Green Textured

Anatomy of a Panel



Scan this QR code to learn more.



1
OPTIONAL TRANSOMS
Adding transoms with active glass and screen allows you an alternative means to control air ventilation.



2
SLENDER DESIGN
Durable components allow for a thin overall panel depth of 2½".



3
CUSTOM CONTROL
The handles on our window panes slide up and down effortlessly for personalized functionality.



4
INSECT CONTROL
Our panels are made with an incredibly durable mesh screen to keep insects out.

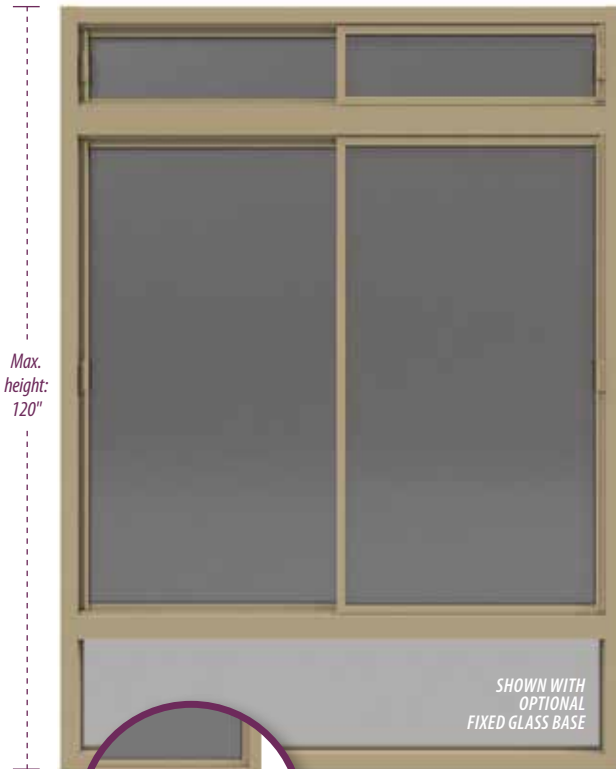


5
TEMPERED SAFETY GLASS
Our 4mm i89 Low-E Tempered Safety Glass is high-performance with clear appearance & high light transmission.

CUSTOM WINDOW PANELS WITH TEMPERED GLASS *in 1/8" increments*

Window panels have a 27" minimum width and a 96" maximum width.

Width:
10"-36" (fixed glass)
14"-36" (screen only)
14"-36" (screen with lift-out glass panels)



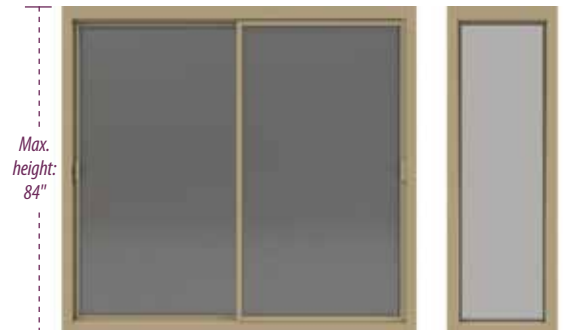
W3
Window panel with transom and base
Overall window panel heights including transom and base up to 120"
Details about individual section parameters can be found under the pictures to the right.

W3F
Narrow Matching Window Panels
Includes matching horizontal dividers with glass, aluminum or screen.



W2T
Window panel with transom
Overall window panel heights including transom up to 120"
Transom height with fixed glass or aluminum 10" to 36"
Transom height with sliding glass 14" to 36"

W2FT



W1M
Window panel; Main section only
Min. height: 15" / Max. height: 84"

W1F



W2B
Window panel with base
Overall window panel heights including base up to 120"
Base height with fixed glass or aluminum 12" to 48"
Base height with sliding glass 14" to 48"

W2FB

Notes:

- As a reference the panel shown above has an 18" fixed glass base, a 66" active glass main, and a 14" active glass transom. The use of an active glass transom is not recommended if the total height of the opening is less than 94", as it may interfere with your view.
- All active glass openings include a screen with standard mesh unless otherwise specified.
- Base section available with fixed glass, aluminum, or active glass with screen.
- All panels 14" or wider are available as screen only.

Note: Due to common carrier height restrictions that vary from region to region, window panels that exceed 88" in both directions may be subject to special shipping conditions. Call us for more information and options in your specific area.

Note: SummerSpace Porch Enclosure Systems are designed to provide a beautiful, weather-resistant protective barrier against the elements in non-habitable living spaces. They are highly effective during normal weather conditions; however, during extreme wind-driven rain, snow, or pollen events, some minor intrusion or seepage may occur. This is considered normal performance.

CUSTOM DOORS WITH TEMPERED GLASS *in 1/8" increments*

Shipping Note: Due to common carrier height restrictions that vary from region to region, door panels that exceed 96" in both directions may need to be shipped unassembled. Call us for more information and options in your specific area.

Net opening with all doors removed is 5" less than the overall door width.

To calculate the approximate net opening with all doors in place, take the overall door width including the frame, divide by 2, minus 6".



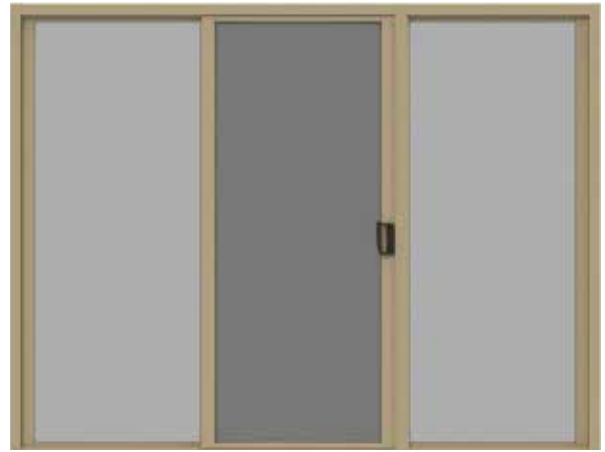
D2
Double sliding patio door with glass and screen

Widths from 60" to 96" | Door heights from 78" to 84"

Double Door Range		60" to 96" in 1/8" increments			
EXAMPLES	Overall Door Width	60"	72"	84"	96"
	Net Opening Width for Sliding Door	24"	30"	36"	42"

Net opening with all doors removed is 5" less than the overall door width.

To calculate the approximate net opening with all doors in place, take the overall panel width including the frame, divide by 3, minus 6".



D3
Triple panel center sliding patio door with glass and screen

Widths from 96" to 124" | Door heights from 78" to 84"

Triple Door Range		96" to 124" in 1/8" increments		
EXAMPLES	Overall Door Width	96"	106"	124"
	Net Opening Width for Sliding Door	27.5"	30"	36"



D2T
Double sliding patio door with transom

Widths from 60" to 96" | Door heights from 78" to 84"
Overall door heights including transom up to 120"
Transom height with fixed glass or aluminum 10" to 36"
Transom height with active glass 14" to 36"

Transom



D3T
Triple panel center sliding patio door with transom

Widths from 96" to 124" | Door heights from 78" to 84"
Overall door heights including transom up to 120"
Transom height with fixed glass or aluminum 10" to 36"
Transom height with active glass 14" to 36"

Notes:

- Doors with glass include sliding and fixed glass panels and one sliding screen door.
- Doors ordered with screen-only include stationary screen panels and one sliding screen door.
- Screen only doors from 78" to 92", transom height 14" to 36".
- All active glass transoms include a screen with standard mesh unless otherwise specified.

STORM DOOR FRAME PANELS

Can be ordered to fit doors from 24" to 48" wide and 72" to 96" high

Storm door not included.

FRAMES WITHOUT TRANSOM

FRAMES WITH TRANSOM



D1
Frame for storm door without transom
Frame height is 1.5" taller than the storm door height.



D1F
Frame for storm door with aluminum filler
• Minimum filler height is 3"



D1T/solid
Frame for storm door with solid transom: fixed glass or aluminum



D1T/sliding
Frame for storm door with active glass and screen



D1T/screen
Frame for storm door with screen-only transom

Note: Storm door refers to a door with a Z-Bar frame for installation.

Aluminum filler would be used in installations with extra height above the door that is too short for a transom.



A Smart Upgrade for Multi-Unit Properties



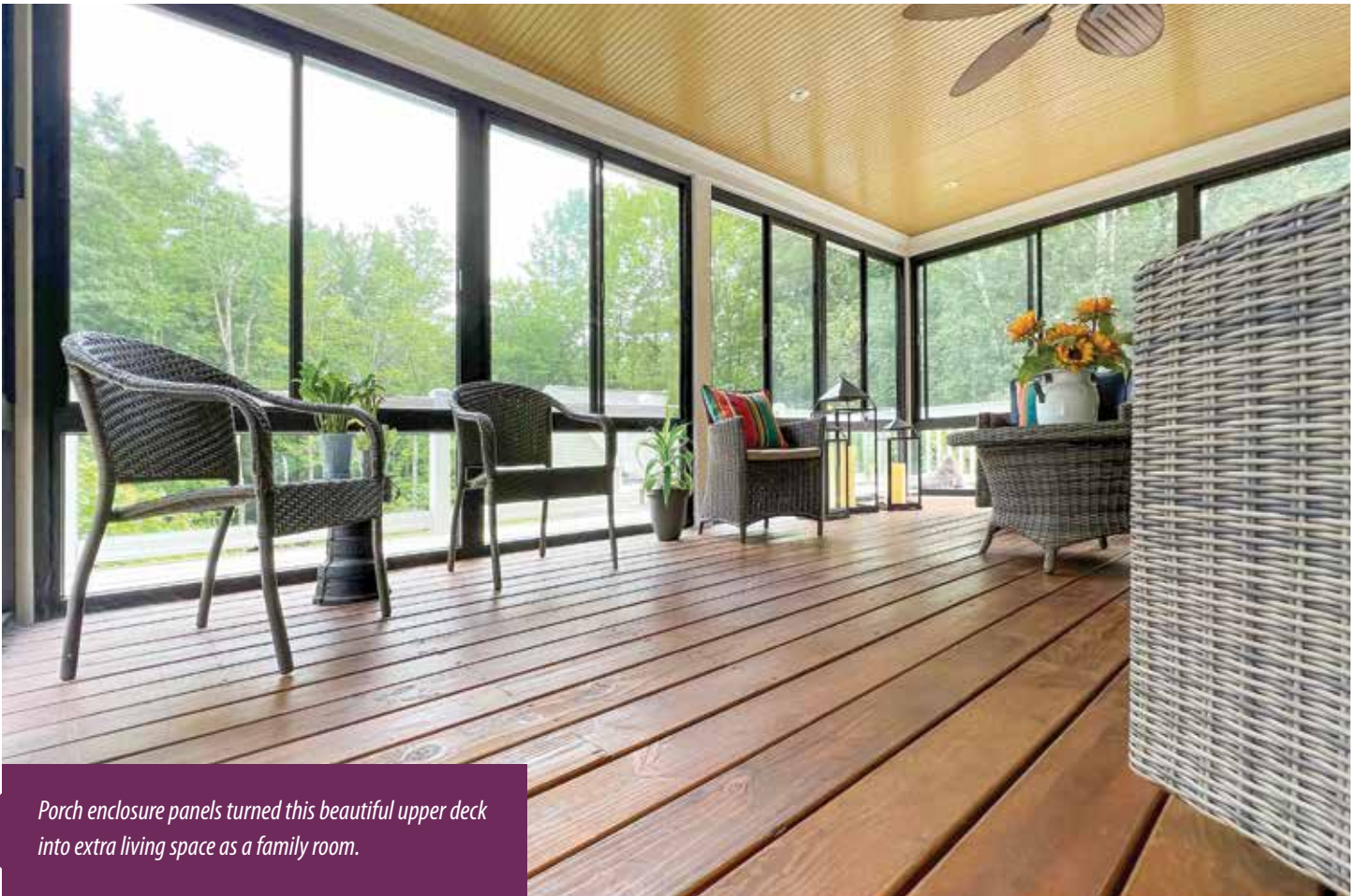
Before: Railings blocked the view, and screens were less functional, offering only seasonal use of balcony space.



SummerSpace® Porch Enclosure Systems are a great fit for condos, ski rentals, and townhouses as the system is completely customizable and configurable to match any number of openings. Not only do they increase the value for each unit, but they also maximize the square footage of living space for use in any season of the year!



Total Comfort Above and Below Deck



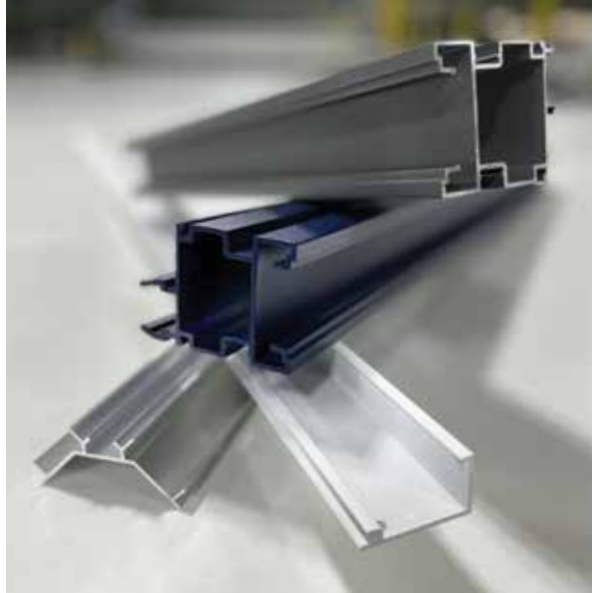
Porch enclosure panels turned this beautiful upper deck into extra living space as a family room.



The homeowner had porch enclosure panels installed under the deck to use as an indoor dog kennel.

EXTRUDED ALUMINUM

Aluminum is a versatile, stable building material used in many architectural and industrial building applications because of its strength and durability. It is affordable and corrosion-resistant, providing a great surface to powder coat for a lasting, rust-proof finish. Aluminum is also low maintenance, recyclable, and structurally stable (unlike roll-formed shaped product). These aspects will assure the long-lasting durability of SummerSpace Porch Panels.



EASY TO REMOVE SASHES

For the days when the air is warm and the breeze is refreshing, you may want to simply have a screen enclosure for your porch. SummerSpace window panes are easy to remove and reinsert with minimal effort, allowing you to customize your comfort as the weather changes. To remove your panes, simply lift upward and slide out from the bottom. To reinsert, lift upward so the pane slides into the groove and allow it to slide down into place.



Panel Features



FLEXSCREEN®

SummerSpace® Porch Enclosure Systems are made exclusively with FlexScreen®. Made using flexible spring steel coated in exterior-grade PVC, the FlexScreen frame is nearly indestructible, scratch-resistant, and impervious to weather extremes. Held firmly in place by tension, the frame disappears into the screen pocket for an unobstructed view. It installs and removes in seconds for easy cleaning.



WARRANTY

The SummerSpace® Porch Enclosure System offers a ten (10) year Limited Prorated* Warranty on manufacturer's defects only, and is fully transferrable from the date of purchase. Parts include Frame and Finish, Tempered Glass and FlexScreens. Exclusions apply. Scan the QR code above for full warranty details.

**This warranty is at a 100% value for years 1–5, thereafter, years 6–10 reduce by 20% per year.*

COLOR MATCHED TRIM

Our two-piece aluminum powder coated trim is a seamless way to add that finishing touch. Available in two sizes, our narrow width is 1 $\frac{3}{8}$ " to cover gaps up to $\frac{3}{4}$ " and a wider 1 $\frac{7}{8}$ " to cover gaps up to 1 $\frac{1}{4}$ ". This unique two-part design attaches easily to the panel with an easy snap-on cap to hide the screws. With a beautiful panel-matching low gloss finish, this trim can be used inside, outside, or both.



COLOR-MATCHED SEALANT & TOUCH-UP PAINT PENS

Our color matched silicone sealant is the perfect way to get a seamless waterproof seal with a finishing touch. Touch-up paint pens are available for that occasional scratch or nick, and are available in all frame colors. We recommend one bottle of sealant for every one to two panels, and one pen of touch-up paint per project.

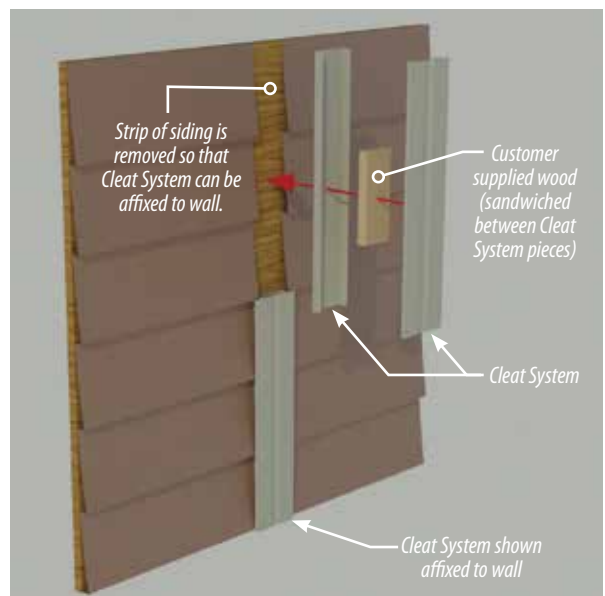


optional Panel Accessories sold separately



UNIVERSAL/ELECTRICAL CHASE

This color matched extrusion integrates seamlessly with the panel system and provides space for receptacles, light switches and wiring from top to bottom. The outside is 100% waterproof while the inside provides a snap-on, fastener-free look with the flexibility to place your electrical accessories exactly where you want them.



WALL CLEAT SYSTEM

Wondering how the system will look adjoining your home's facade? Our wall cleat system allows for a seamless transition between your home and the enclosure system, working on almost every type of exterior cladding. It eliminates the need to color-match a different solution saving time and money during the installation process.



SUMMERSPACE® DEALER: